

HERITAGE VILLAGE CENTER

SWC BASELINE AVENUE & CHERRY AVENUE, FONTANA, CA



PROJECT FEATURES

[Website](#) // [Facebook](#)

- + Anchored by Vons, Panda Express, Wendy's and U.S. Bank
- + 110,000 sf neighborhood center with over 1.2 million annual visitors
- + Over 8,400 employees within two miles
- + Excellent access to the I-210 and I-10 freeways via the Cherry Ave. exit(s) and the I-15 via the Baseline Avenue exit
- + Neighboring retailers include Tutor Time, Wells Fargo, AutoZone, Mountain View Tire, Chase Bank and KFC

DEMOGRAPHICS

Radius	1-Miles	2-Miles	3-Miles
Estimated Population	13,959	61,106	137,501
Estimated Avg. HH Income	\$134,186	\$120,835	\$117,702

TRAFFIC COUNT

Baseline Ave. 21,006 ADT (2021)

Cherry Ave. 21,552 ADT (2021)

Source: City of Fontana



LEWIS RETAIL CENTERS
Lic. 1252241
T. 909-946-7518
retailinfo@lewismc.com

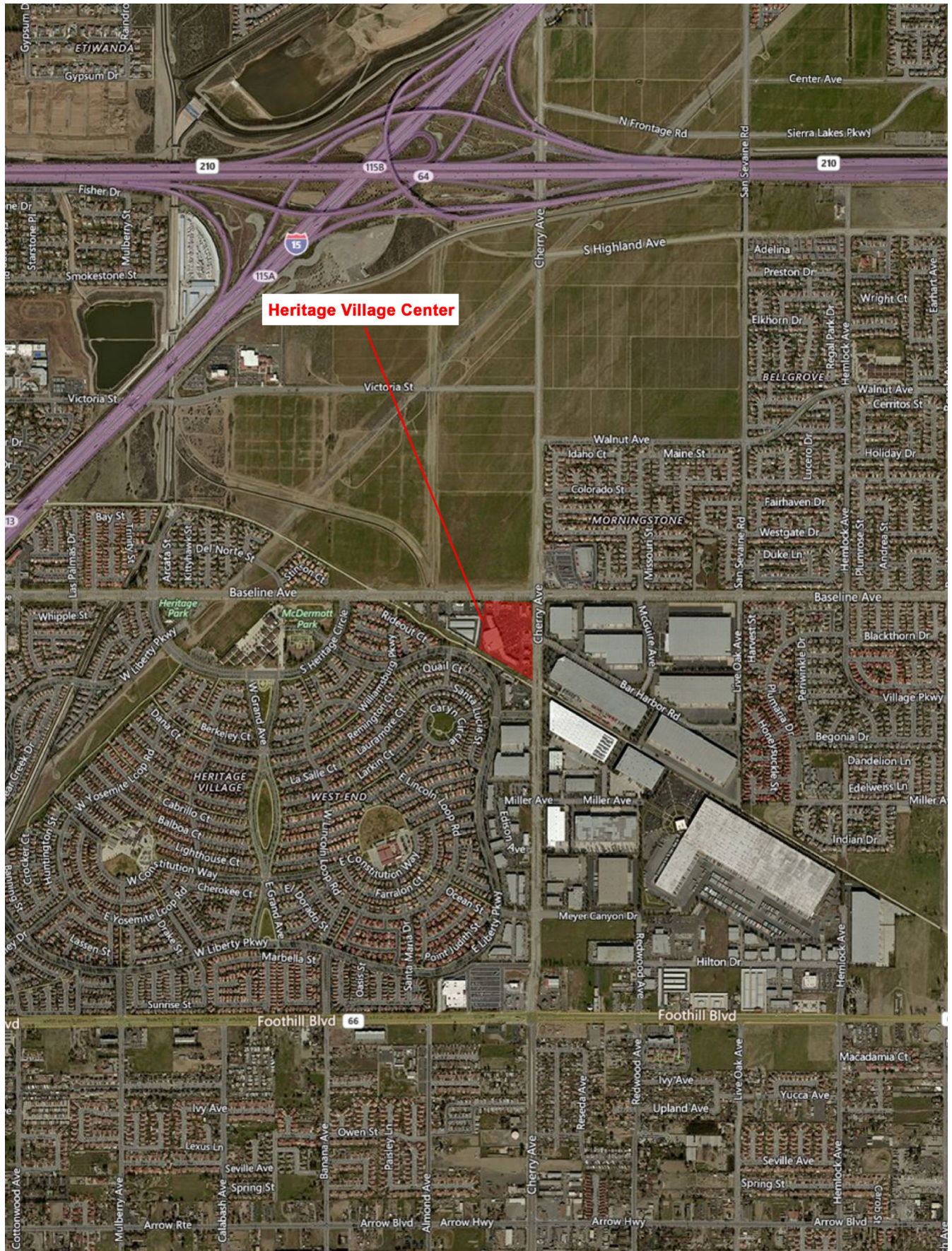


Lewis Retail Centers

Offered by Lewis Management Corp., a licensed real estate broker, DRE License 01994759. This information has been obtained from sources believed reliable. We have not verified it and make no guarantee, warranty or representation about it. Any projections, opinions, assumptions or estimates used are for example only and do not represent the current or future performance of the property. You and your property advisors should conduct a careful, independent investigation of the property to determine to your satisfaction the suitability of the property for your needs.

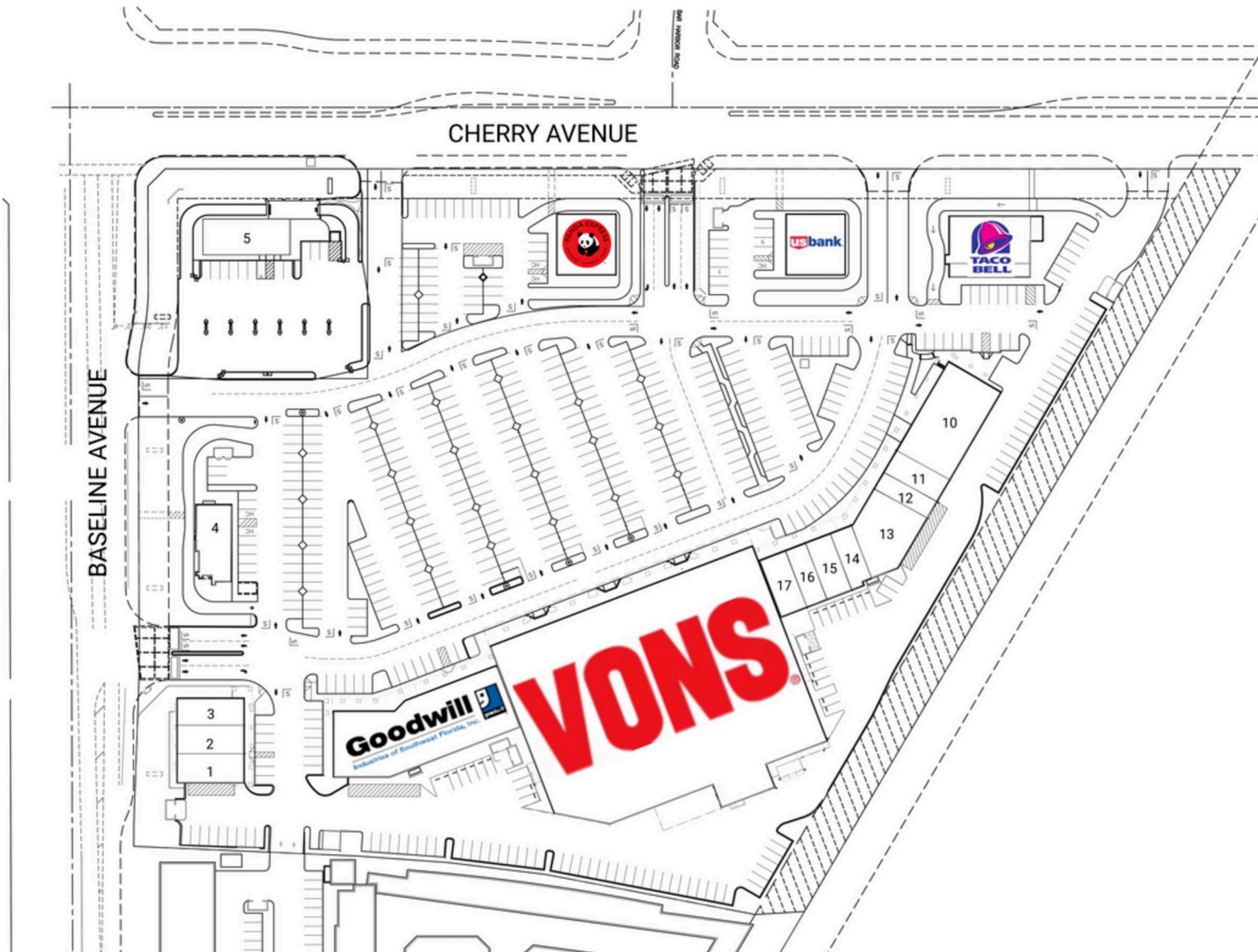
HERITAGE VILLAGE CENTER

SWC BASELINE AVENUE & CHERRY AVENUE, FONTANA, CA



HERITAGE VILLAGE CENTER

SWC BASELINE AVENUE & CHERRY AVENUE, FONTANA, CA



	TENANT	SQFT
1	Kim's Tae Kwon Do	2,442
2	Juice It Up	1,227
3	Mathnasium	1,831
4	Wendy's	3,023
5	Shell/Picoso Mexican	2,975
6	Panda Express	3,500
7	US Bank	3,546
9	Taco Bell	4,002
10	TIV Fitness	4,764
11	Smiling Feet	1,485
12	Postal Annex	930
13	Graziano's Pizza	4,535
14	Musicland	1,040
15	Heritage Dental	1,525
16	H&R Block	1,200
17	City Nails	1,485
18	Vons	56,865
19	Goodwill	11,637

LEWIS RETAIL CENTERS

Lic. 1252241

T. 909-946-7518

retailinfo@lewismc.com



Lewis Retail Centers

Offered by Lewis Management Corp., a licensed real estate broker, DRE License 01994759. This information has been obtained from sources believed reliable. We have not verified it and make no guarantee, warranty or representation about it. Any projections, opinions, assumptions or estimates used are for example only and do not represent the current or future performance of the property. You and your property advisors should conduct a careful, independent investigation of the property to determine to your satisfaction the suitability of the property for your needs.

SUMMARY PROFILE

2000-2010 Census, 2020 Estimates with 2025 Projections

Calculated using Weighted Block Centroid from Block Groups

Lat/Lon: 34.1207/-117.4898

RS1

Baseline Ave

Fontana, CA 92336

1 mi radius 2 mi radius 3 mi radius

POPULATION	2020 Estimated Population	13,959	61,106	137,501
	2025 Projected Population	14,256	62,323	140,129
	2010 Census Population	13,367	56,066	123,790
	2000 Census Population	8,959	32,122	75,415
	Projected Annual Growth 2020 to 2025	0.4%	0.4%	0.4%
	Historical Annual Growth 2000 to 2020	2.8%	4.5%	4.1%
	2020 Median Age	33.9	32.6	31.7
HOUSEHOLDS	2020 Estimated Households	3,783	16,126	36,141
	2025 Projected Households	3,887	16,533	37,010
	2010 Census Households	3,539	14,421	31,714
	2000 Census Households	2,358	8,291	18,984
	Projected Annual Growth 2020 to 2025	0.5%	0.5%	0.5%
	Historical Annual Growth 2000 to 2020	3.0%	4.7%	4.5%
RACE AND ETHNICITY	2020 Estimated White	43.2%	45.9%	47.3%
	2020 Estimated Black or African American	17.2%	12.9%	10.9%
	2020 Estimated Asian or Pacific Islander	17.3%	14.2%	11.7%
	2020 Estimated American Indian or Native Alaskan	0.8%	0.9%	0.9%
	2020 Estimated Other Races	21.5%	26.2%	29.3%
	2020 Estimated Hispanic	45.7%	53.3%	58.1%
INCOME	2020 Estimated Average Household Income	\$134,186	\$120,835	\$117,702
	2020 Estimated Median Household Income	\$116,926	\$104,501	\$101,123
	2020 Estimated Per Capita Income	\$36,396	\$31,906	\$30,951
EDUCATION (AGE 25+)	2020 Estimated Elementary (Grade Level 0 to 8)	4.3%	7.6%	9.3%
	2020 Estimated Some High School (Grade Level 9 to 11)	6.1%	8.2%	8.3%
	2020 Estimated High School Graduate	21.9%	24.2%	24.3%
	2020 Estimated Some College	30.7%	25.6%	24.2%
	2020 Estimated Associates Degree Only	10.7%	7.3%	7.2%
	2020 Estimated Bachelors Degree Only	17.7%	18.1%	17.5%
	2020 Estimated Graduate Degree	8.5%	9.1%	9.1%
BUSINESS	2020 Estimated Total Businesses	454	1,262	3,291
	2020 Estimated Total Employees	4,525	10,857	28,127
	2020 Estimated Employee Population per Business	10.0	8.6	8.5
	2020 Estimated Residential Population per Business	30.8	48.4	41.8

This report was produced using data from private and government sources deemed to be reliable. The information herein is provided without representation or warranty.